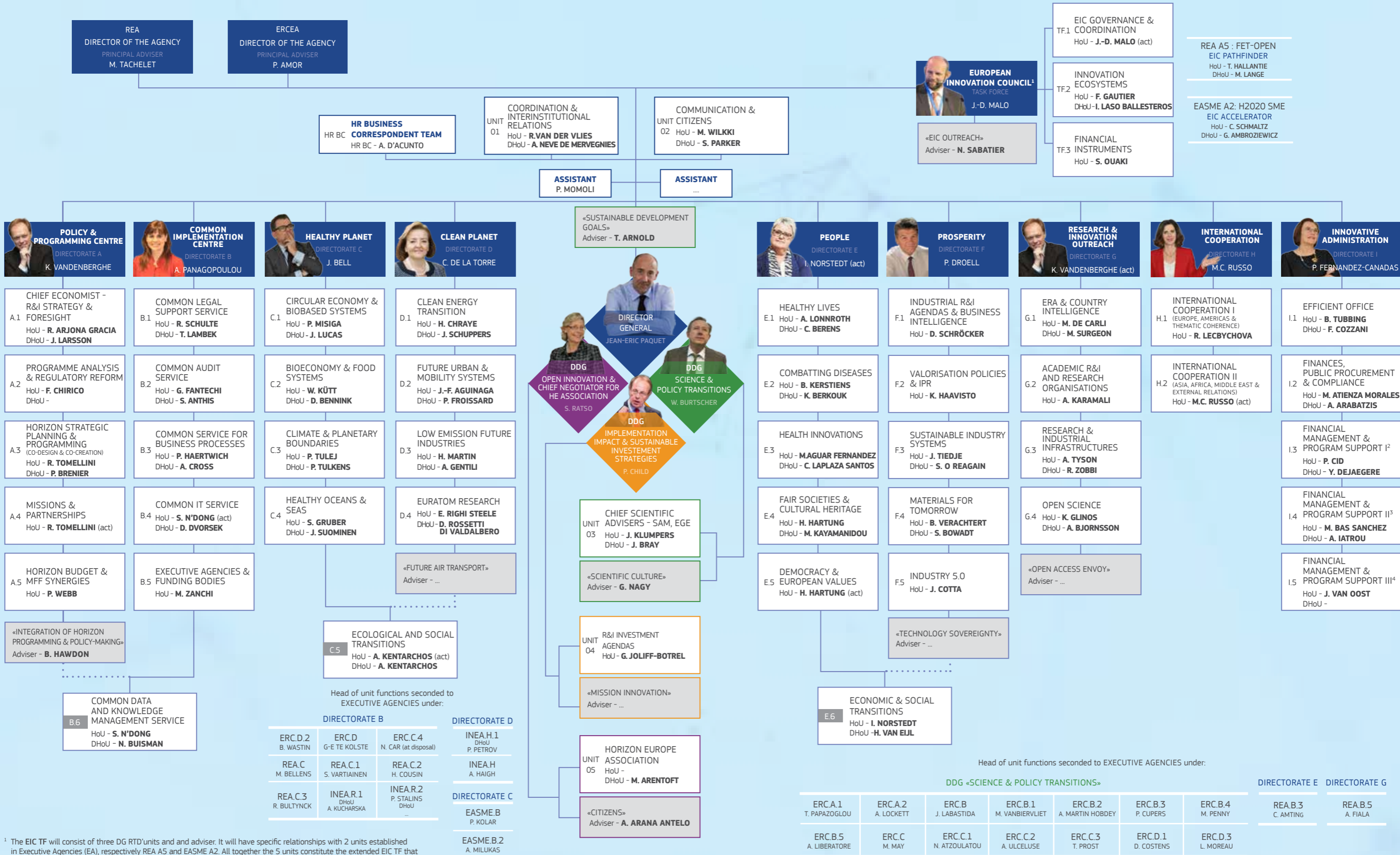


# Directorate-General for RESEARCH and INNOVATION



<sup>1</sup> The EIC TF will consist of three DG RTD units and an adviser. It will have specific relationships with 2 units established in Executive Agencies (EA), respectively REA AS and EASME A2. All together the 5 units constitute the extended EIC TF that is governed by a Steering Committee respectively chaired and co-chaired by the DGs of DG CNECT and DG RTD.  
<sup>2</sup> Unit I3 in charge of Directorates A, B, G, TF EIC & Units 02, 03, 05 and experts management  
<sup>3</sup> Unit I4 in charge of Directorates E and D (without RFCS)  
<sup>4</sup> Unit I5 in charge of Directorates C, F and RFCS activity